

NAMAKWA DISTRICT MUNICIPALITY ECONOMIC PROFILE REPORT

1. BACKGROUND CONTEXT

The Northern Cape is the province with the smallest economy. It is situated towards the west of the country. The province shares international borders with Namibia and Botswana and provincial boundaries with the North West, Free State, Western Cape and Eastern Cape provinces. The Northern Cape is spatially the largest province covering 363 389 km² or approximately 29.7% of the total surface area of South Africa. On the western side of the province lies the Atlantic Ocean.

The Northern Cape is the least populated province with a population density estimated at approximately 2 persons per square kilometer. Approximately 78% of the population lives in functional urbanized areas. This combination of low population density and high urbanization provided awesome development challenges.

The local economic regeneration program, undertaken mainly through the Social Plan Fund, is intended to enable Municipalities to undertake studies so as to identify economic development opportunities and viable projects for implementation. A particular emphasis is placed primarily on Municipalities that face, or are likely to endure strenuous economic development problems.

2. INTRODUCTION

2.1) Appointment of Stabilis Development (Pty) Ltd

The Namakwa District Municipality appointed Stabilis Development (Pty) Ltd to complete a District Economic Development Profile with the first major output being an Economic Profile Report. The content of this document therefore contains the Economic Profile Report.

It should be noted that the Economic Profile Report is one element of the broader Integrated Economic Development Plan (IEDP) of the Namakwa District Municipality. The proposal to develop an IEDP has been submitted to the Development Bank of South Africa (DBSA). The final sanction of the DBSA is still awaited.

The Department Local Government (DPLG), having made a grant of Two Hundred Thousand available for an IEDP, urged the Namakwa District Municipality to utilize the money for the intended purpose. The Namaqua District Municipality decided to use the money for the purpose of compiling the Economic Profile Report.

2.2) The Terms of Reference

In accordance with the Terms of Reference, Stabilis Development (Pty) Ltd undertake to provide a strategic consolidation and presentation of information on the following aspects:

2.2.1) Socio-economic profile

2.2.2) District economic production structure

2.2.3) District employment structure

2.2.4) Sectoral Profile: manufacturing, agribusiness, agriculture, tourism, SMMEs, commerce, etc.

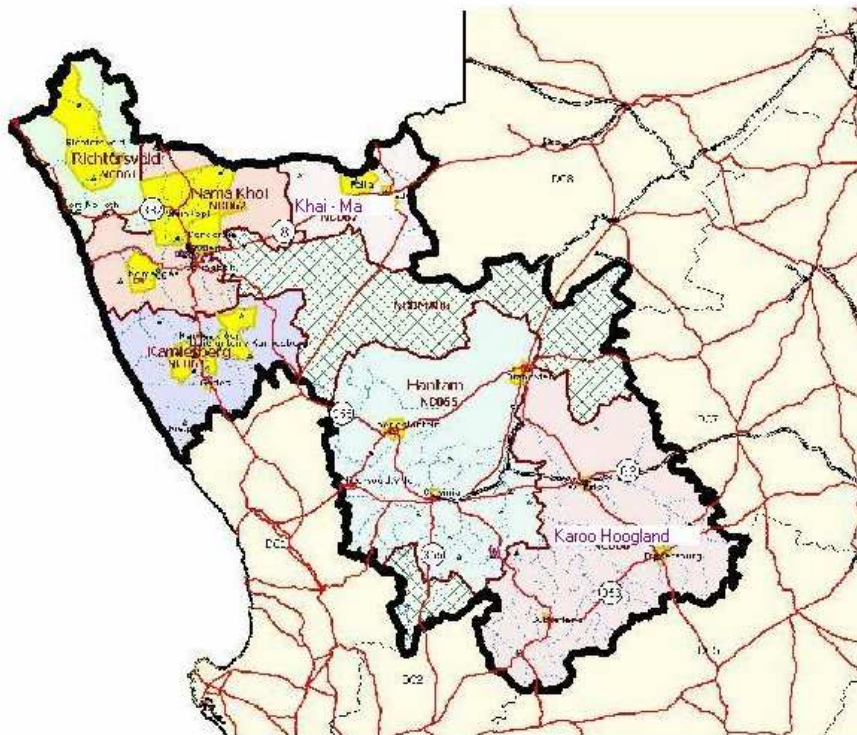
2.2.5) Integrated competitive and opportunity analysis

The product of this intervention will be an **Economic Profile Report**.

3. THE ECONOMIC PROFILE REPORT

3.1) Brief Description of the District

Namakwa District Municipality



The Namaqua District Municipality is a newly demarcated district that emanated from the amalgamation of the earlier Namaqualand (Springbok and surrounds) and Hantam (Calvinia and surrounds) District Councils. The seat of governance of the Namaqua District Municipality is in Springbok. The Namaqua District Municipality has a branch office in Calvinia.

The Namaqua District Municipality (DC06) comprises of the following Municipalities with the head office as indicated: